

July 2018

Scotia Industrial Buildings Inventory

site (a portion of APN 205-351-023 and 205-351-030) is located on land owned by the HRC and is currently designated industrial general (IG) by the Humboldt County General Plan, is zoned and classified by the County as heavy industrial/qualified (MH/Q).

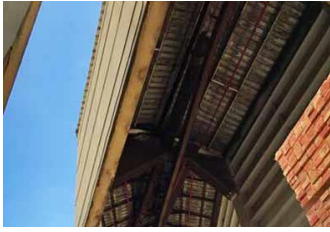


Overview of Scotia, California USA. **Scotia-mill-1989.©2016-Greg-King**

South Monorail Tunnel #1, ref. 2018 HRC, photos by GTakano

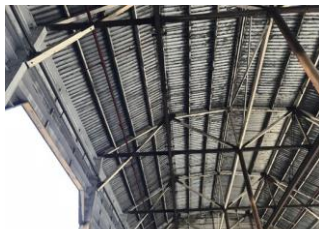


SCOTA PHOTO DATABASE ARCHIVES HRC





South Monorail Tunnel #2, ref. 2018 HRC, photos by GTakano



South Monorail Tunnel #2 (continued)



North Monorail Tunnel, ref. 2018 HRC, photos by GTakano



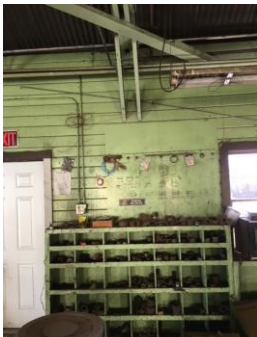
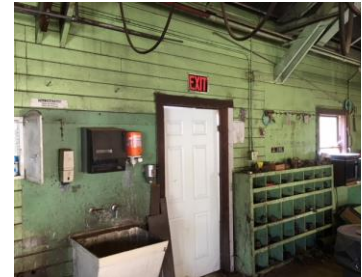
Northern Monorail Tunnel (continued)



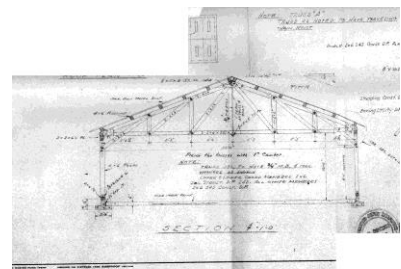
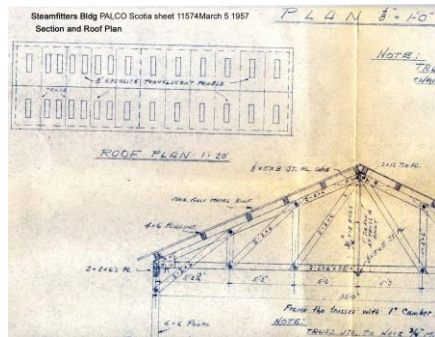
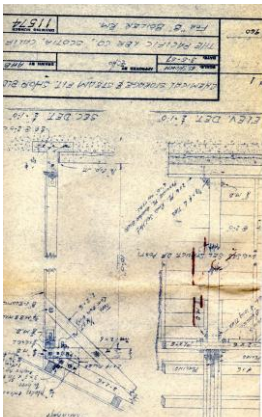
Steamfitters Building ref. 2018 HRC, photos by GTakano



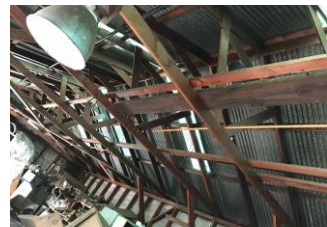
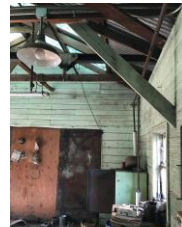
Steamfitters Building (continued)



Steamfitters Building (continued)



Pipefitters Building ref. 2018 HRC, photos by GTakano



Pipefitters Building (continued)

