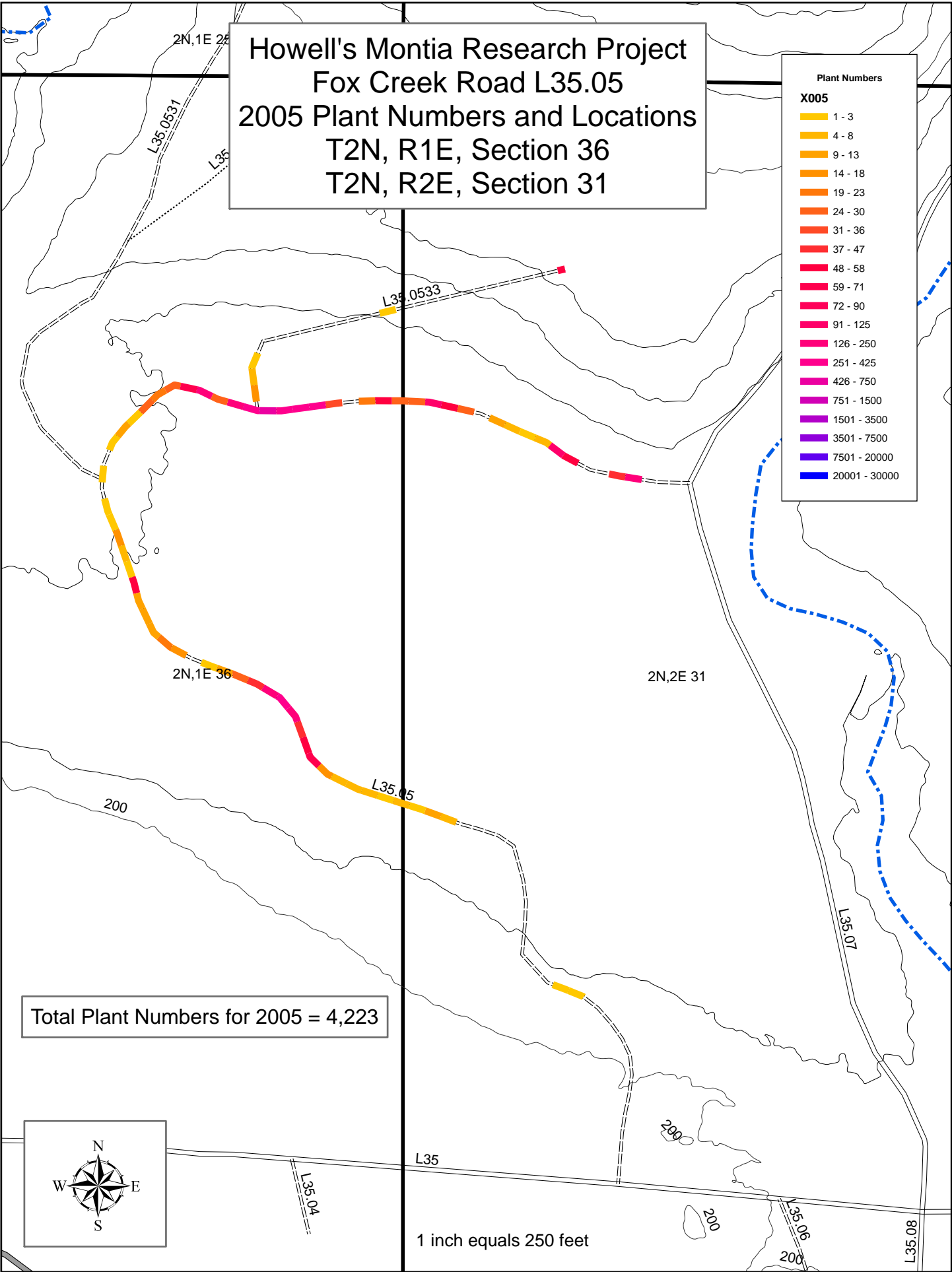


Howell's Montia Research Project
 Fox Creek Road L35.05
 2005 Plant Numbers and Locations
 T2N, R1E, Section 36
 T2N, R2E, Section 31

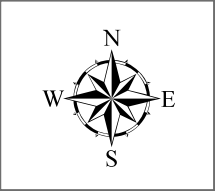
Plant Numbers

X005

1 - 3
4 - 8
9 - 13
14 - 18
19 - 23
24 - 30
31 - 36
37 - 47
48 - 58
59 - 71
72 - 90
91 - 125
126 - 250
251 - 425
426 - 750
751 - 1500
1501 - 3500
3501 - 7500
7501 - 20000
20001 - 30000



Total Plant Numbers for 2005 = 4,223



1 inch equals 250 feet