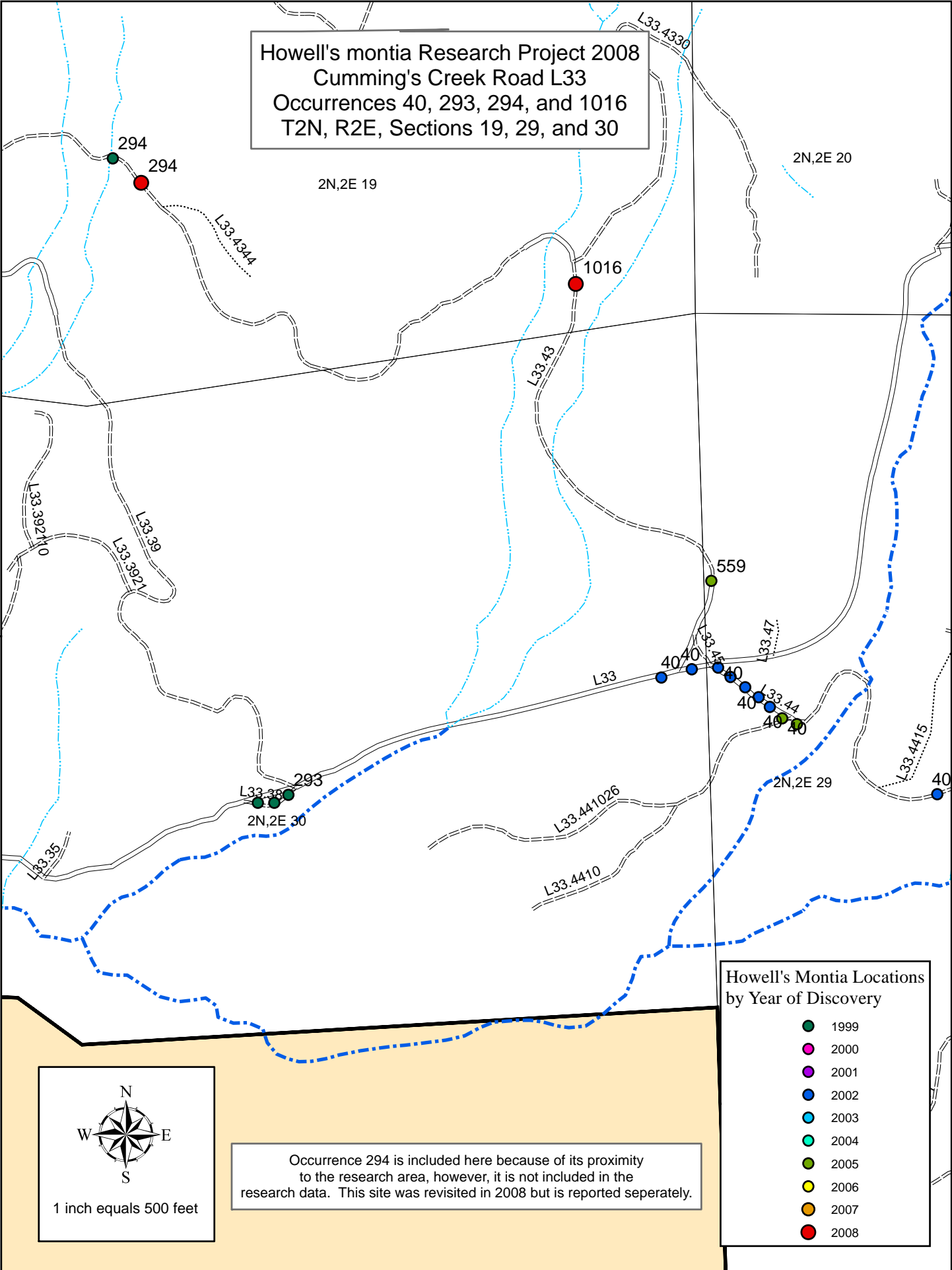


Howell's montia Research Project 2008
 Cumming's Creek Road L33
 Occurrences 40, 293, 294, and 1016
 T2N, R2E, Sections 19, 29, and 30



Howell's Montia Locations
 by Year of Discovery

- 1999
- 2000
- 2001
- 2002
- 2003
- 2004
- 2005
- 2006
- 2007
- 2008



1 inch equals 500 feet

Occurrence 294 is included here because of its proximity to the research area, however, it is not included in the research data. This site was revisited in 2008 but is reported separately.